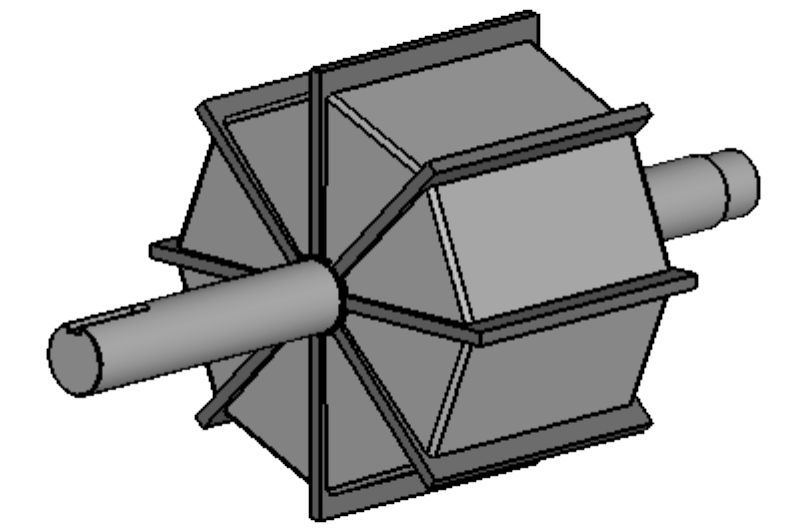
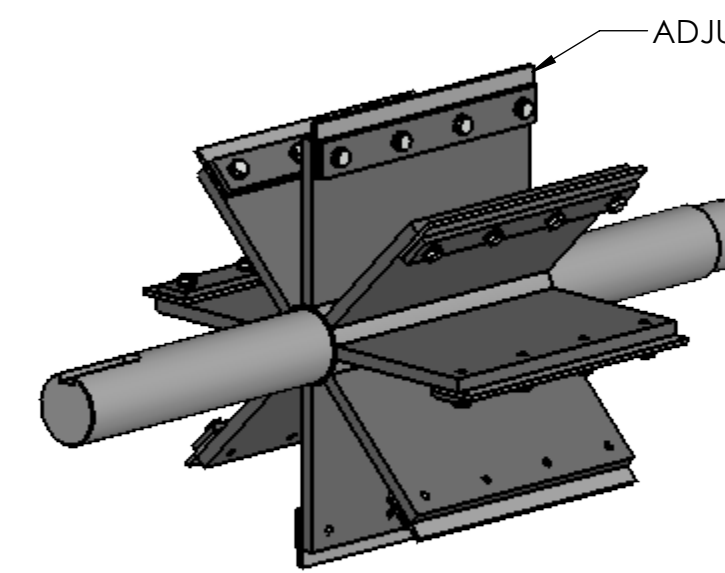


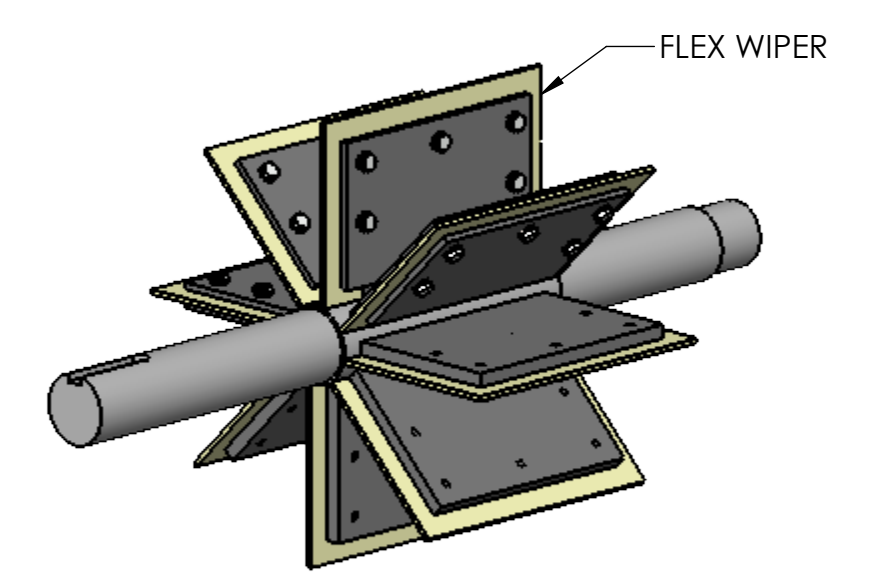
TYPE 'A' ROTOR



TYPE 'B' & 'C' ROTOR

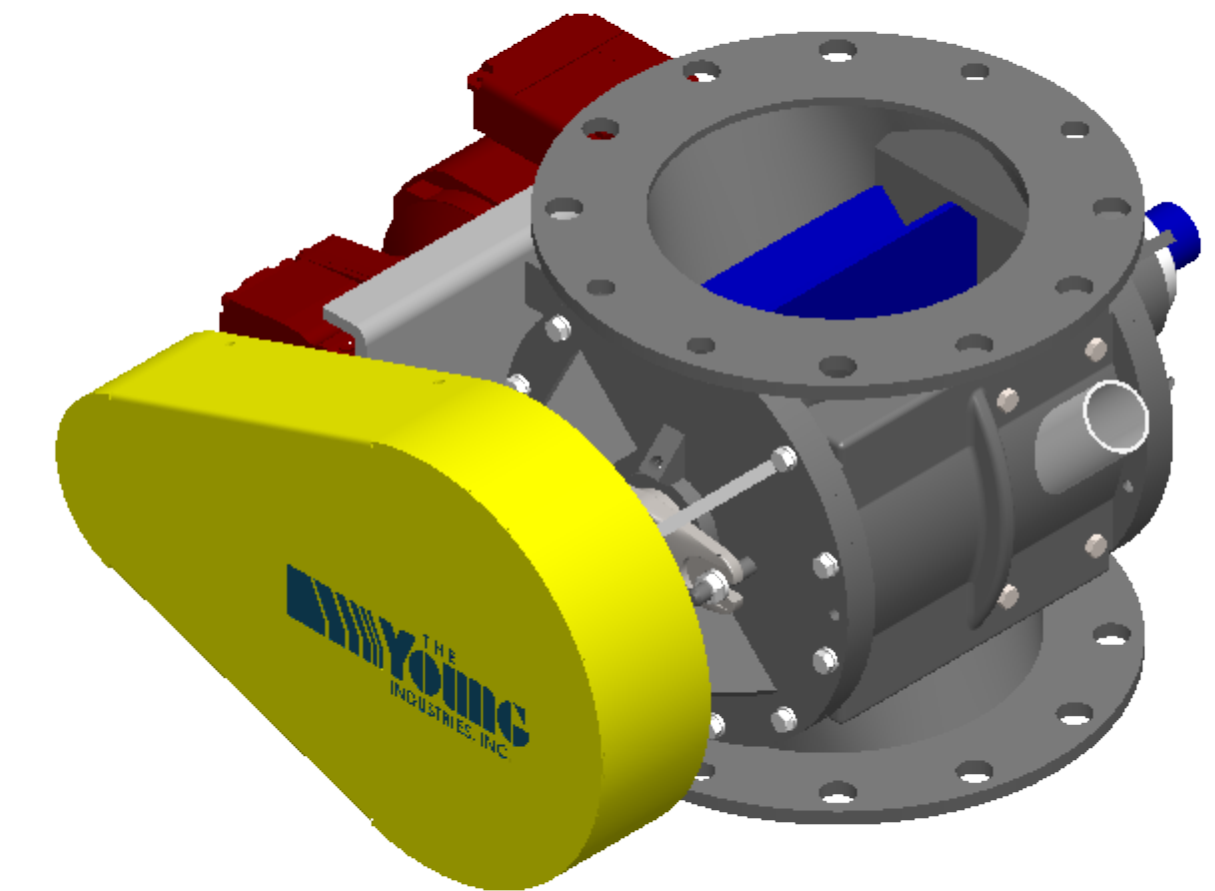
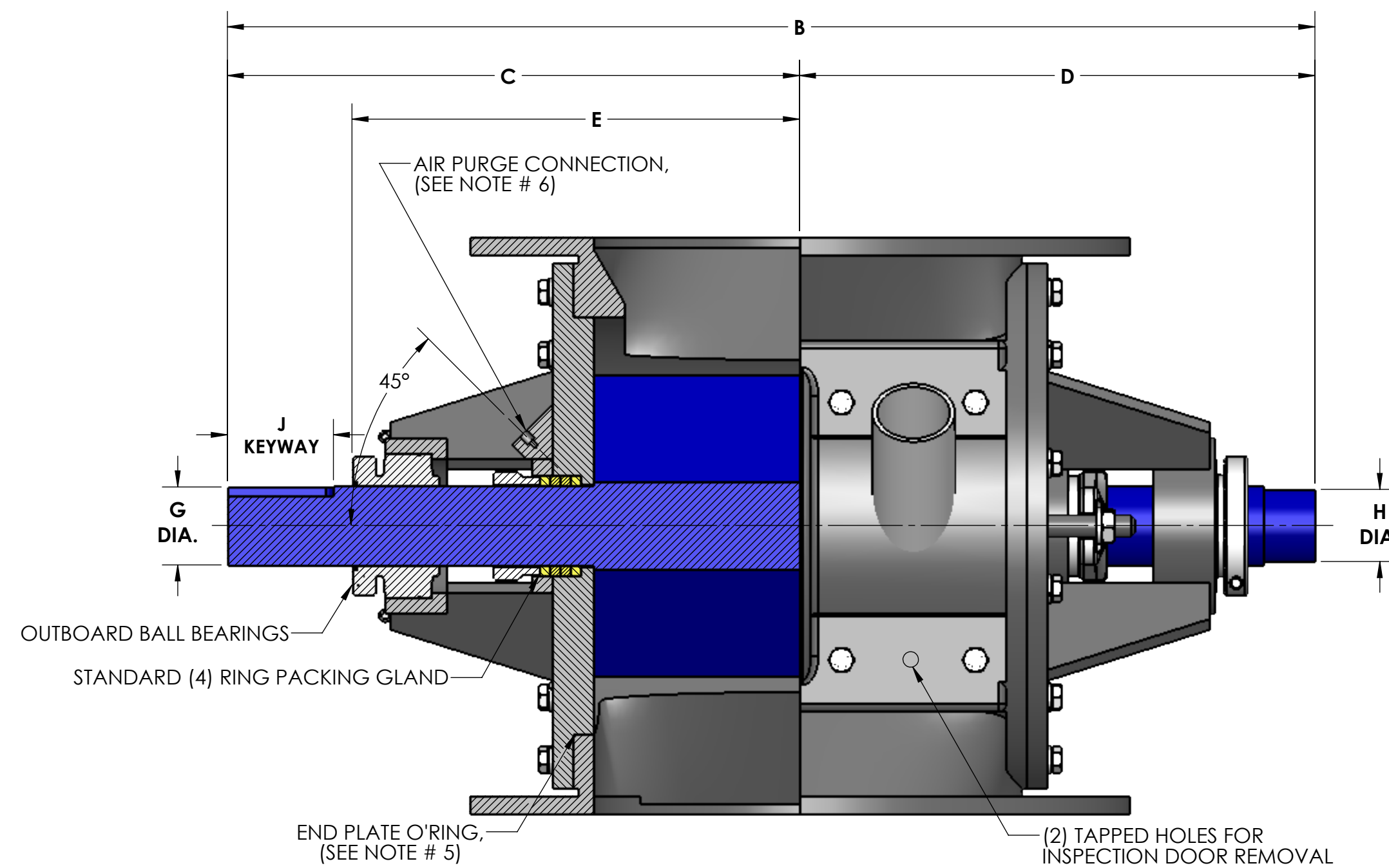
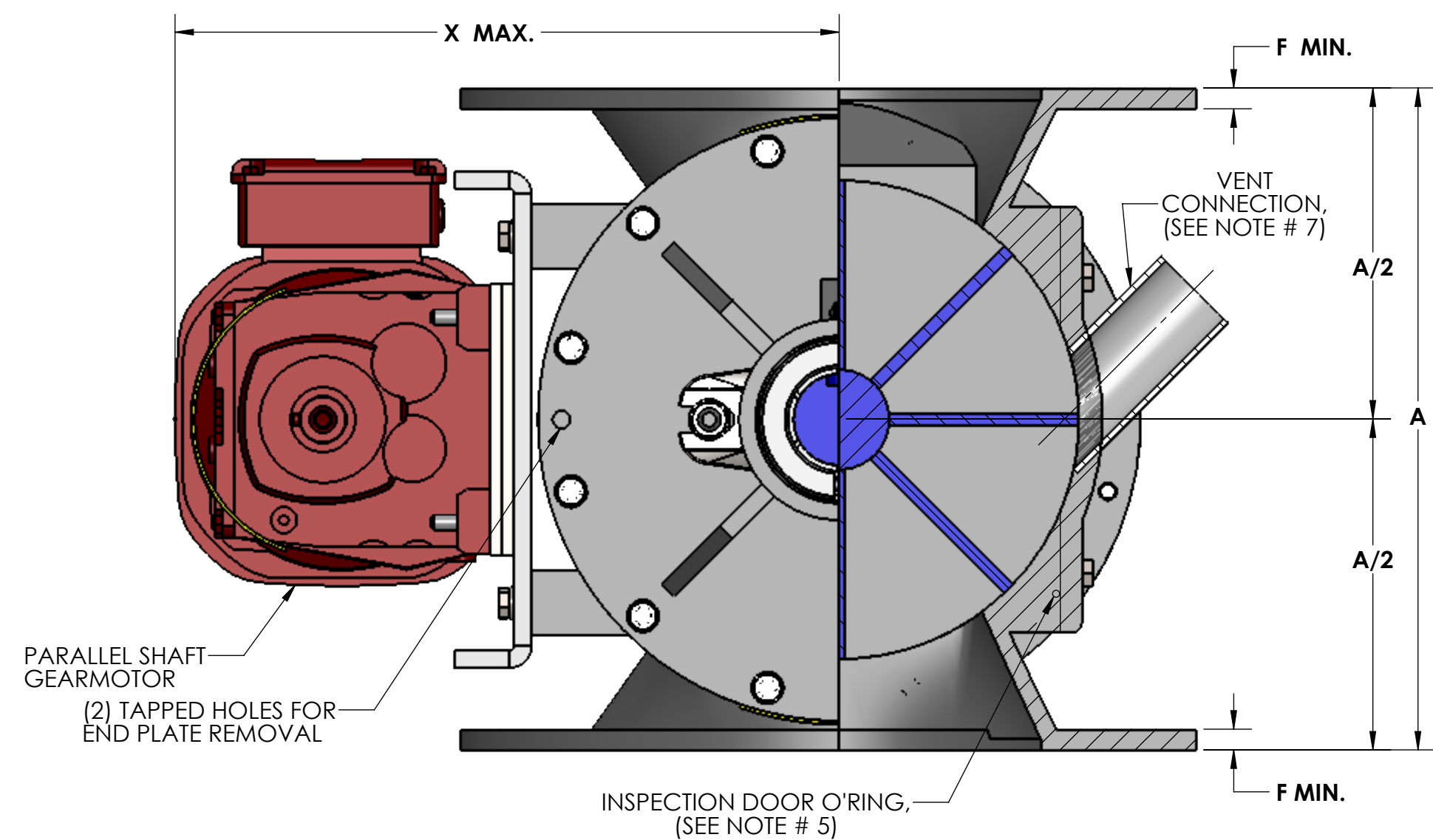


TYPE 'D' ROTOR



TYPE 'D3' ROTOR

ROTOR SIZES: 6" - 16" 8-VANES  
18" - 24" 12-VANES



Size	ROTOR DIA x LG.	ROTOR CAPACITY CU. FT. PER REV.					STD RPM	VENT SIZE	STD HP	A	B	C	D	E	F	G	H	J	K	L	M	N	P	Q	R	S	T	U	V	W	X	Y	WEIGHT
		A	B	C	D	DB																											
6	6 x 6	.0793	.0513	.0243	.0721	.0708	32	1.50	.50	10.00	21.25	11.31	8.69	8.31	.44	1.19	1.00	.25 x .12 x 2.62	11.00	9.50	6.00	(4) .88	(4) .75-10UNC-2B	9.50	6.00	.62	4.12	N/A	(6) .56	(2) .50-13UNC-2B	13.31	20.38	245
8	8 x 8	.198	.122	.0840	.188	.175	32	2.00	.50	12.00	23.50	12.44	9.81	9.44	.44	1.44	1.25	.38 x .19 x 2.62	13.50	11.75	8.00	(4) .88	(4) .75-10UNC-2B	11.50	8.00	.62	5.12	2.56	(14) .56	(2) .50-13UNC-2B	14.31	20.38	350
10	10 x 10	.395	.237	.153	.383	.357	32	2.50	.50	14.00	26.38	13.88	11.25	10.88	.44	1.94	1.75	.50 x .25 x 2.62	16.00	14.25	10.00	(8) 1.00	(4) .88-9UNC-2B	14.75	10.00	1.00	6.38	3.19	(14) .56	(2) .50-13UNC-2B	15.38	20.38	415
12	12 x 12	.662	.367	.198	.652	.610	32	2.50	.75	17.00	28.38	14.88	12.25	11.88	.56	1.94	1.75	.50 x .25 x 2.62	19.00	17.00	12.00	(8) 1.00	(4) .88-9UNC-2B	16.75	12.00	1.00	7.38	3.69	(14) .56	(2) .50-13UNC-2B	16.38	20.38	580
14	15 x 13	1.161	.732	.224	1.15	1.003	30	3.00	.75	20.00	29.62	15.38	12.75	12.38	.56	2.19	2.00	.50 x .25 x 2.62	21.00	18.75	13.00	(8) 1.12	(4) 1.00-8UNC-2B	18.00	13.00	1.00	8.00	4.00	(14) .56	(2) .50-13UNC-2B	18.00	20.38	750
16	17 x 15	1.748	.912	.355	1.735	1.639	30	3.50	1.0	22.00	32.75	17.31	13.94	13.56	.62	2.44	2.25	.62 x .31 x 3.38	23.50	21.25	15.00	(12) 1.12	(4) 1.00-8UNC-2B	20.00	15.00	1.00	9.00	4.50	(14) .69	(2) .62-11UNC-2B	19.00	21.38	900
18	19 x 17	2.364	1.29	.626	2.341	2.154	28	3.50	1.0	24.00	34.75	18.31	14.94	14.56	.62	2.44	2.25	.62 x .31 x 3.38	25.00	22.75	17.00	(12) 1.25	(4) 1.12-7UNC-2B	22.00	17.00	1.00	10.00	5.00	(14) .69	(2) .62-11UNC-2B	19.94	21.38	950
20	21 x 19	3.166	1.715	.837	3.142	2.908	28	4.00	1.5	26.00	38.62	20.31	16.81	16.44	.62	2.94	2.75	.75 x .38 x 3.50	27.50	25.00	19.00	(16) 1.25	(4) 1.12-7UNC-2B	25.50	19.00	1.25	11.50	5.75	(14) .81	(2) .75-10UNC-2B	22.00	25.75	1,450
22	23 x 21	4.268	2.351	1.046	4.242	3.941	26	5.00	1.5	28.00	40.62	21.31	17.81	17.44	.62	2.94	2.75	.75 x .38 x 3.50	29.75	27.25	21.00	(16) 1.38	(4) 1.25-7UNC-2B	27.50	21.00	1.25	12.50	6.25	(14) .81	(2) .75-10UNC-2B	23.00	25.75	1,520
24	25 x 23	5.587	3.046	1.386	5.558	5.189	24	5.00	1.5	30.00	42.62	22.31	18.81	18.44	.62	2.94	2.75	.75 x .38 x 3.50	32.00	29.50	23.00	(16) 1.38	(4) 1.25-7UNC-2B	29.50	23.00	1.25	13.50	6.75	(14) .81	(2) .75-10UNC-2B	24.06	25.75	1,600

SPECIFICATIONS ARE SUBJECT TO CHANGE WITHOUT NOTIFICATION

NOTES:

1. VALVE HOUSINGS ARE CAST OF IRON OR ALUMINUM; FABRICATED OF STEEL OR STAINLESS STEEL. ALL ROTORS ARE FABRICATED OF STEEL OR STAINLESS STEEL.
2. VALVE HOUSINGS ARE AVAILABLE WITH ANY COMBINATION OF SQUARE OR ROUND INLET AND OUTLET. ROUND FLANGES MATCH 150# ANSI DRILLING.
3. STANDARD HOUSINGS ARE DESIGNED FOR 15 PSI (MAX) INTERNAL & DIFFERENTIAL @ 250 DEGREES F.
4. INSPECTION DOOR IS OPTIONAL AND WILL BE FURNISHED ONLY WHEN SPECIFIED.
5. END PLATES AND INSPECTION DOOR O-RINGS ARE OPTIONAL AND WILL BE FURNISHED ONLY WHEN SPECIFIED.
6. AIR PURGE CONNECTIONS 1/8" NPT WITH BRASS LANTERN RINGS ARE OPTIONAL AND WILL BE FURNISHED ONLY WHEN SPECIFIED.
7. VENT WITH SCH 10 PIPE IS OPTIONAL AND WILL BE FURNISHED ONLY WHEN SPECIFIED. VENT CONNECTION WILL CHANGE ROTOR ROTATION TO COUNTER-CLOCKWISE.

GENERAL TOLERANCES	
UNLESS OTHERWISE SPECIFIED THE FOLLOWING SHALL APPLY	
MACHINING - .XX = .02 XXX = .005 ANGLE = .50°	
SURFACE ROUGHNESS HEIGHT 63 MICRONS OR LESS	
FABRICATION - UNDER 6" 6 TO 24" 24 TO 60" OVER 60"	
± .06 ± .12 ± .19 ± .25	
UNLESS OTHERWISE SPECIFIED DIMENSIONS ARE IN INCHES	

REV. NO.	DESCRIPTION	DATE	BY
REVISIONS			
CUSTOMER			
CUST. NO.			
VALVE ORDER NO.			
TITLE			
YOUNG INDUSTRIES MODEL 'LH' ROTARY VALVE, SIZE 6" - 24", CLASS 15 WITH PARALLEL SHAFT DRIVE, OPEN ROTOR STANDARD DIMENSION SHEET			
<b>THE YOUNG INDUSTRIES, INC.</b> MUNCY, PENNSYLVANIA 17756 TELEPHONE: 570-546-3165			
DRAWN BY: BMF	DATE DRAWN: 3/21/16		
CHECKED BY:	SCALE: 1:3		
DRAWING NUMBER		S-4-6392	REV: