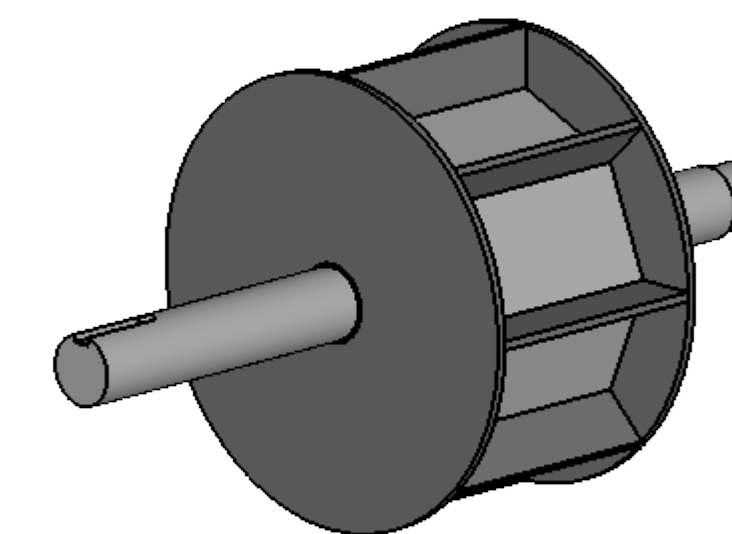
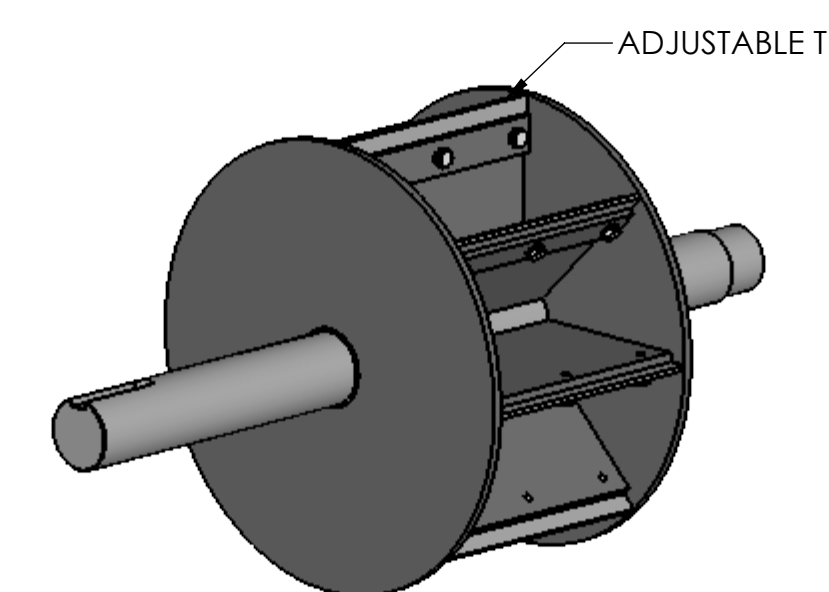


TYPE 'AS' ROTOR

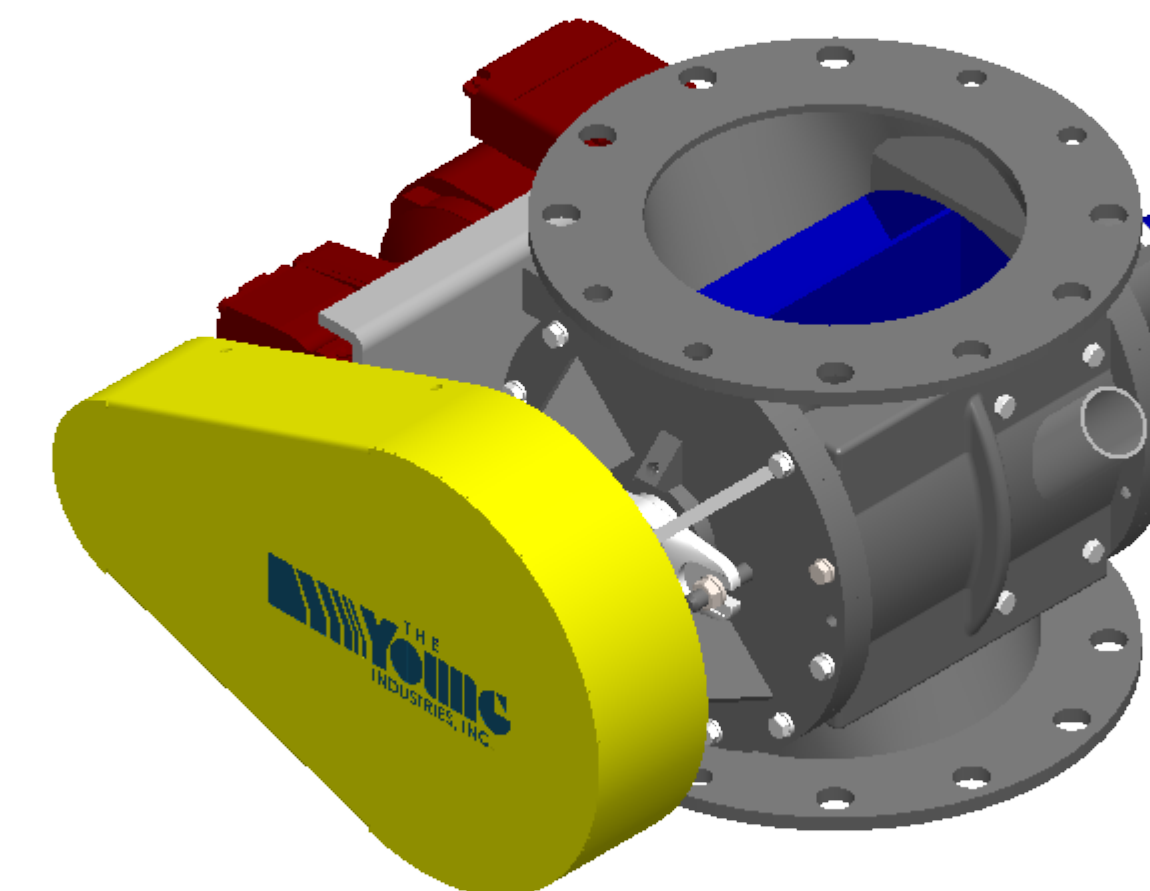
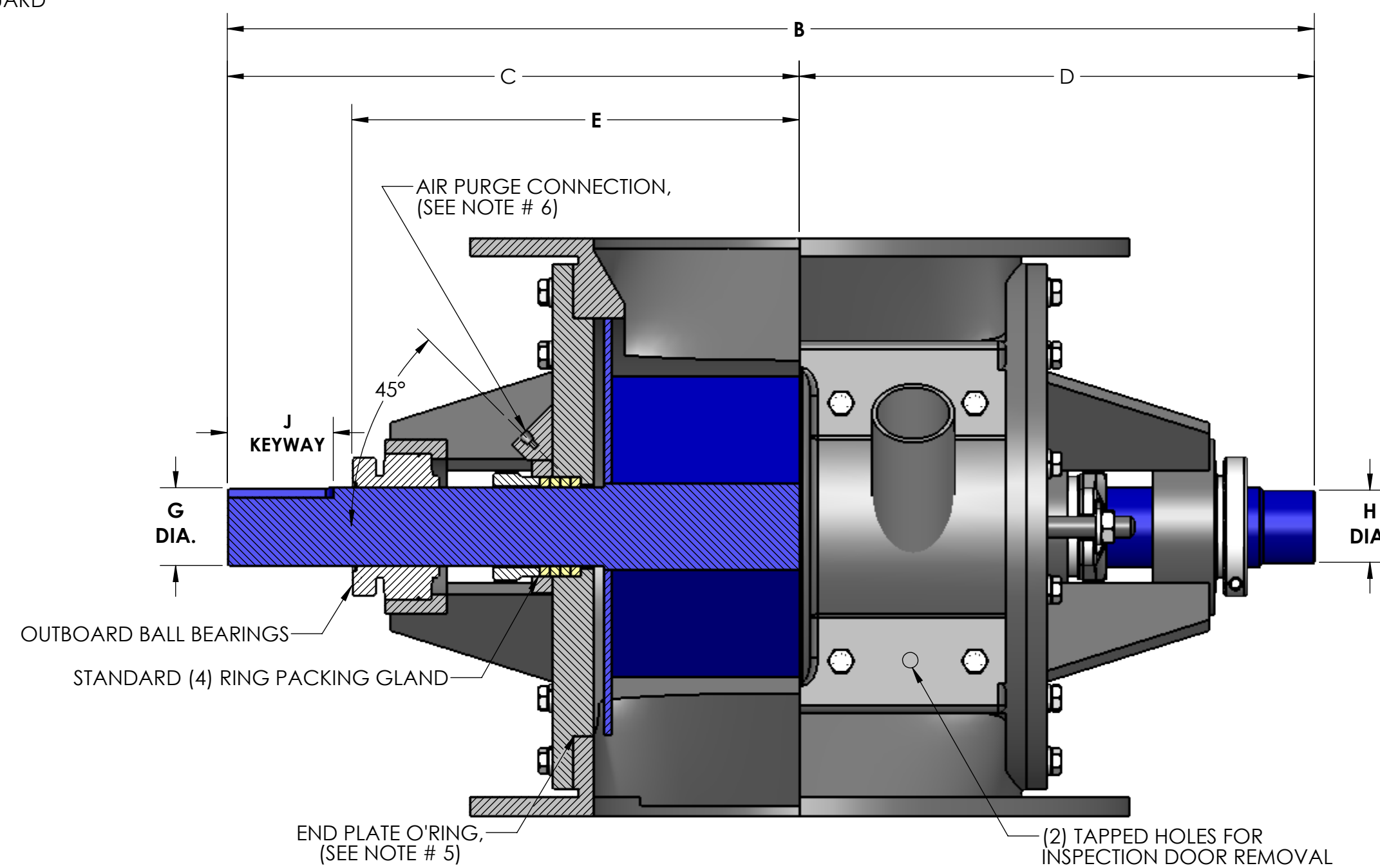
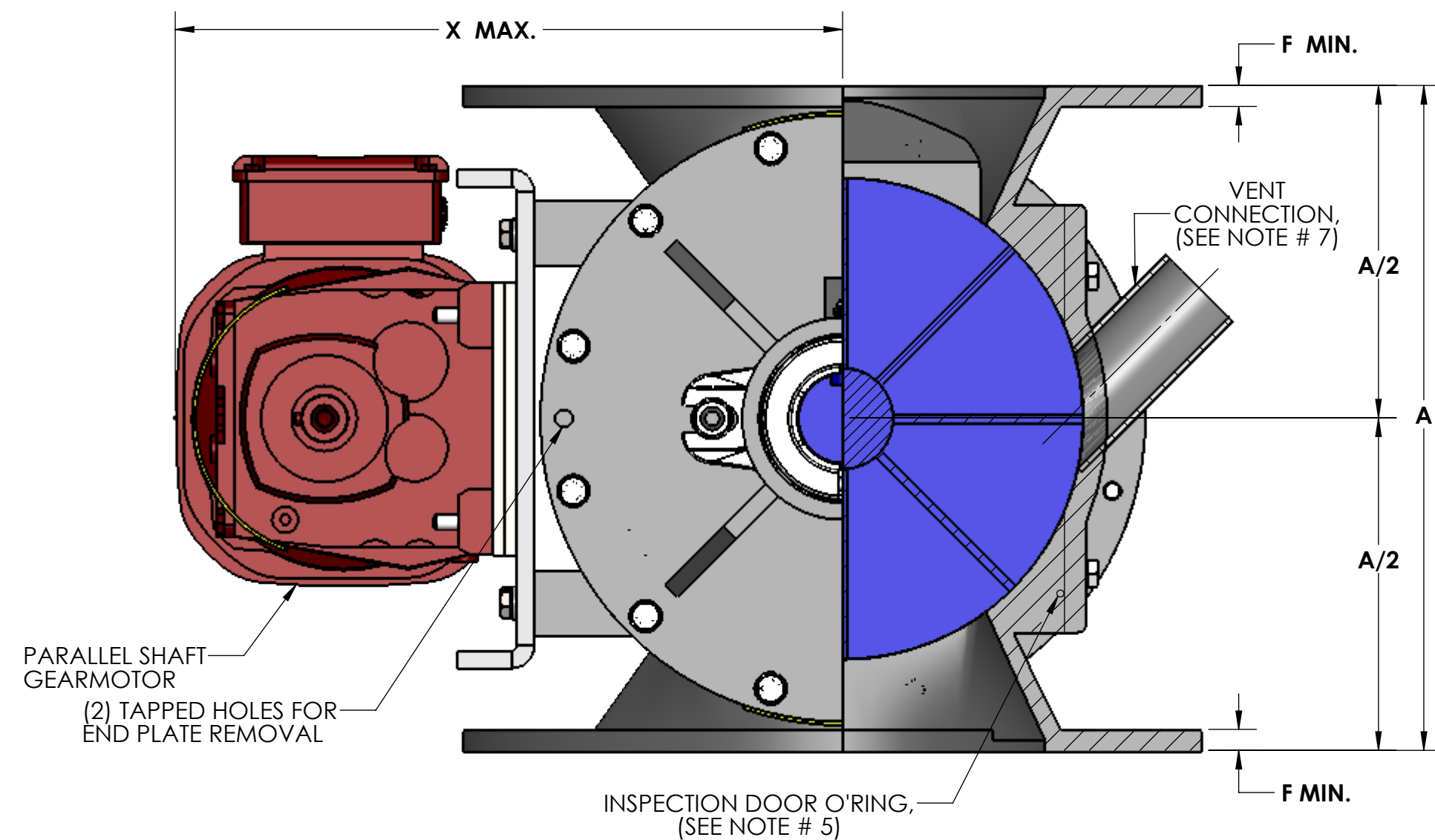


TYPE 'BS' & 'CS' ROTOR



TYPE 'DS' ROTOR

ROTOR SIZES: 6" - 16" 8-VANES  
18" - 24" 12-VANES



- NOTES:**
1. VALVE HOUSINGS ARE CAST OF IRON OR ALUMINUM; FABRICATED OF STEEL OR STAINLESS STEEL. ALL ROTORS ARE FABRICATED OF STEEL OR STAINLESS STEEL.
  2. VALVE HOUSINGS ARE AVAILABLE WITH ANY COMBINATION OF SQUARE OR ROUND INLET AND OUTLET. ROUND FLANGES MATCH 150# ANSI DRILLING.
  3. STANDARD HOUSINGS ARE DESIGNED FOR 15 PSI (MAX) INTERNAL & DIFFERENTIAL @ 250 DEGREES F.
  4. INSPECTION DOOR IS OPTIONAL AND WILL BE FURNISHED ONLY WHEN SPECIFIED.
  5. END PLATES AND INSPECTION DOOR O-RINGS ARE OPTIONAL AND WILL BE FURNISHED ONLY WHEN SPECIFIED.
  6. AIR PURGE CONNECTIONS 1/8" NPT WITH BRASS LANTERN RINGS ARE OPTIONAL AND WILL BE FURNISHED ONLY WHEN SPECIFIED.
  7. VENT WITH SCH 10 PIPE IS OPTIONAL AND WILL BE FURNISHED ONLY WHEN SPECIFIED. VENT CONNECTION WILL CHANGE ROTOR ROTATION TO COUNTER-CLOCKWISE.

Size	ROTOR DIA x LG.	ROTOR CAPACITY CU. FT. PER REV.				STD RPM	VENT SIZE	STD HP	A	B	C	D	E	F	G	H	J	K	L	M	N	P	Q	R	S	T	U	V	W	X	Y	WEIGHT C/S
		AS	BS	CS	DS																											
6	6x6	.0709	.0453	.0214	.0655	32	1.50	.50	10.00	21.25	11.31	8.69	8.31	.44	1.19	1.00	.25 x .12 x 2.62	11.00	9.50	6.00	(4) .88	(4) .75-10UNC-2B	9.50	6.00	.62	4.12	N/A	(6) .56	(2) .50-13UNC-2B	13.31	20.38	245
8	8x8	.182	.112	.0765	.175	32	2.00	.50	12.00	23.50	12.44	9.81	9.44	.44	1.44	1.25	.38 x .19 x 2.62	13.50	11.75	8.00	(4) .88	(4) .75-10UNC-2B	11.50	8.00	.62	5.12	2.56	(14) .56	(2) .50-13UNC-2B	14.31	20.38	350
10	10x10	.371	.221	.142	.361	32	2.50	.50	14.00	26.38	13.88	11.25	10.88	.44	1.94	1.75	.50 x .25 x 2.62	16.00	14.25	10.00	(8) 1.00	(4) .88-9UNC-2B	14.75	10.00	1.00	6.38	3.19	(14) .56	(2) .50-13UNC-2B	15.38	20.38	415
12	12x12	.627	.341	.184	.620	32	2.50	.75	17.00	28.38	14.88	12.25	11.88	.56	1.94	1.75	.50 x .25 x 2.62	19.00	17.00	12.00	(8) 1.00	(4) .88-9UNC-2B	16.75	12.00	1.00	7.38	3.69	(14) .56	(2) .50-13UNC-2B	16.38	20.38	580
14	15x13	1.096	.682	.208	1.089	30	3.00	.75	20.00	29.62	15.38	12.75	12.38	.56	2.19	2.00	.50 x .25 x 2.62	21.00	18.75	13.00	(8) 1.12	(4) 1.00-8UNC-2B	18.00	13.00	1.00	8.00	4.00	(14) .56	(2) .50-13UNC-2B	18.00	20.38	750
16	17x15	1.664	.857	.332	1.656	30	3.50	1.0	22.00	32.75	17.31	13.94	13.56	.62	2.44	2.25	.62 x .31 x 3.38	23.50	21.25	15.00	(12) 1.12	(4) 1.00-8UNC-2B	20.00	15.00	1.00	9.00	4.50	(14) .69	(2) .62-11UNC-2B	19.00	21.38	900
18	19x17	2.327	1.239	.602	2.313	28	3.50	1.0	24.00	34.75	18.31	14.94	14.56	.62	2.44	2.25	.62 x .31 x 3.38	25.00	22.75	17.00	(12) 1.25	(4) 1.12-7UNC-2B	22.00	17.00	1.00	10.00	5.00	(14) .69	(2) .62-11UNC-2B	19.94	21.38	950
20	21x19	2.982	1.594	.777	2.978	28	4.00	1.5	26.00	38.62	20.31	16.81	16.44	.62	2.94	2.75	.75 x .38 x 3.50	27.50	25.00	19.00	(16) 1.25	(4) 1.12-7UNC-2B	25.50	19.00	1.25	11.50	5.75	(14) .81	(2) .75-10UNC-2B	22.00	25.75	1,450
22	23x21	4.042	2.201	.978	4.037	26	5.00	1.5	28.00	40.62	21.31	17.81	17.44	.62	2.94	2.75	.75 x .38 x 3.50	29.75	27.25	21.00	(16) 1.38	(4) 1.25-7UNC-2B	27.50	21.00	1.25	12.50	6.25	(14) .81	(2) .75-10UNC-2B	23.00	25.75	1,520
24	25x23	5.314	2.869	1.305	5.308	24	5.00	1.5	30.00	42.62	22.31	18.81	18.44	.62	2.94	2.75	.75 x .38 x 3.50	32.00	29.50	23.00	(16) 1.38	(4) 1.25-7UNC-2B	29.50	23.00	1.25	13.50	6.75	(14) .81	(2) .75-10UNC-2B	24.06	25.75	1,600

SPECIFICATIONS ARE SUBJECT TO CHANGE WITHOUT NOTIFICATION

REV. NO.	DESCRIPTION	DATE	BY
REVISIONS			
CUSTOMER			
CUST. NO.			
YOUNG ORDER NO.			
TITLE YOUNG INDUSTRIES MODEL 'LH' ROTARY VALVE, SIZE 6" - 24", CLASS 15 WITH PARALLEL SHAFT DRIVE, SHROUDED ROTOR STANDARD DIMENSION SHEET			
 THE YOUNG INDUSTRIES, INC. MUNCY, PENNSYLVANIA 17756 TELEPHONE: 570-546-3165			
DRAWN BY: BMF		DATE DRAWN: 3/21/16	
CHECKED BY:		SCALE: 1:3	
DRAWING NUMBER		REV:	

S-4-6397