

**Rugged and Reliable™ "LH" Rotary Valve
Engineered to Increase Productivity and Built to Last**

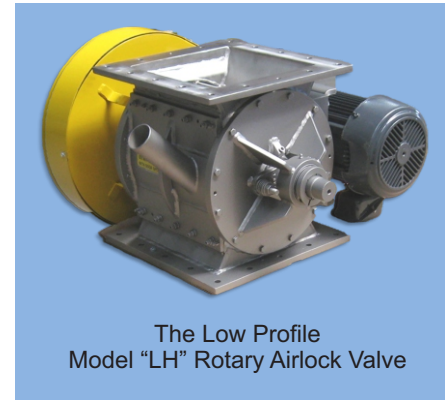
The Young Industries, Inc. Model "LH" (Low Headroom) Rotary Valve is a Drop-Thru Airlock Feeder Valve with a lower profile for application requiring less headroom. The Model "LH" valve is recommend when the valve is sized based matching a flange size and a high throughput capacity is not a concern. In addition to the low profile, the Model "LH" Rotary Valve has less air or gas leakage.

The Model "LH" Rotary Valve design uses a small diameter rotor and angled inlet and outlet nozzles. This ensures two-blade sealing is maintained at all times providing minimum air or gas leakage. Typical use is for an application requiring a flange size to match or a low headroom requirement.

Model "LH" Rotary Feeder Valve has less air or gas leakage

The standard features are: Heavy Duty operation with 15 PSIG Housing and differential pressure or vacuum, Minimum four blade sealing with two (2) blade sealing on each side, cast or fabricated carbon steel, cast or fabricated stainless steel and cast or fabricated aluminum,

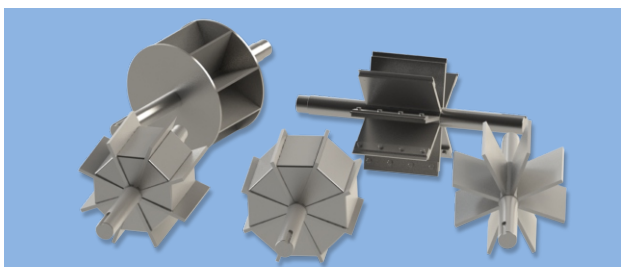
round or square inlet and discharge flanges, up to 250°F operation temperature, outboard-mounted precision ball bearings, packing gland rotor shaft seal consisting square braided Kevlar impregnated with PTFE packing, 4 rings per side and held in place by an aluminum packing follower, rotor assembled near-perfect concentrically to the housing, heavy rotor shafts secured to eliminate shifting in the housing



The Low Profile Model "LH" Rotary Airlock Valve

As a result, the Young Industries, Model "LH" rotary valves have been proven to provide superior performance and reliability in a wide range of bulk materials handling applications, and offer a low cost of ownership.

Rotor Size (Inches)	Open End Rotor Capacity					Closed End (Shrouded) Rotor Capacity (cu. ft. / rev) (100% pocket fill*)				Standard Speed (RPM)	HP	Weight C/S (lbs.)
	Type A	Type B	Type C	Type D	Type D3	Type AS	Type BS	Type CS	Type DS			
4	0.0186	0.0123	0.0083	----	----	0.0169	0.0110	0.0074	----	38	1/2	205
5	0.0416	0.0273	0.0136	----	----	0.0362	0.0235	0.0117	----	38	1/2	220
6	0.0793	0.0513	0.0243	0.0721	0.0708	0.0709	0.0453	0.0214	0.0655	32	1/2	245
8	0.1980	0.1220	0.0840	0.1880	0.1570	0.1820	0.1120	0.0765	0.1750	32	1/2	350
10	0.3950	0.2370	0.1530	0.3830	0.3570	0.3710	0.2210	0.1420	0.3610	32	1/2	415
12	0.6620	0.3670	0.1980	0.6520	0.6100	0.6270	0.3410	0.1840	0.6200	32	3/4	580
14	1.1610	0.7320	0.2240	1.1500	1.0830	1.0960	0.6820	0.2080	1.0890	30	3/4	750
16	1.7480	0.9120	0.3550	1.7350	1.6390	1.6640	0.8570	0.3320	1.6560	30	1	900
18	2.3640	1.2900	0.6260	2.3410	2.1540	2.3270	1.2390	0.6020	2.3130	28	1	950
20	3.1660	1.7150	0.8370	3.1420	2.9080	2.9820	1.5940	0.7770	2.9780	28	1.5	1450
22	4.2680	2.3510	1.0460	4.2420	3.9410	4.0420	2.2010	0.9780	4.0370	26	1.5	1520
24	5.5870	3.0460	1.3860	5.5580	5.1890	5.3140	2.8690	1.3050	5.3080	24	1.5	1600



Rotors to handle a wide range of process requirements

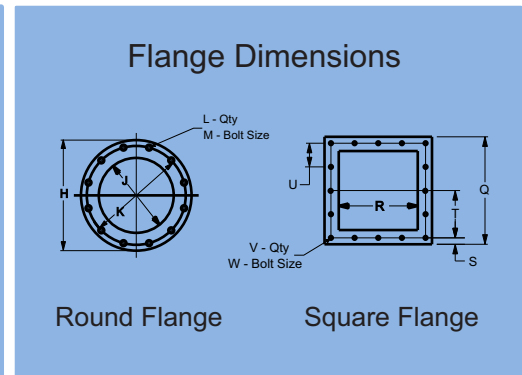
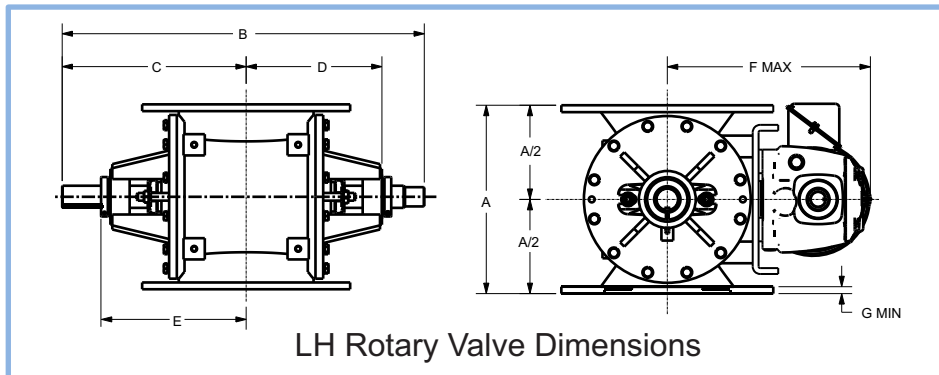
Two basic styles of rotors are offered with "LH" Rotary Valves. The open end and closed end or shrouded rotor with each style having several variations. The types are "A" – Standard, "B & C" – partially filled pockets, "D" – adjustable tips and "D3" – for open end style only has flexible tips and ends.

The "LH" Rotary Valve standard features increase the valve's service life and lowers the cost of ownership

Optional features and accessories are offered for meeting your exact plant requirements and enhance your process performance.

The optional features and accessories are:

- High pressure design to 350 PSIG
- High temperature design to 1600°F
- Special sizes 1" to 36" and double length styles
- Drive and accessories are usually supplied consisting of a parallel shaft gear motor, sprockets, drive chain and safety guard. TEFC or explosion proof motors, direct connected and other special drive available
- Special materials of construction including: 316 Stainless steel, Hastelloy, Titanium, engineered plastics
- Interior coating to provide abrasive resistance to material release including: chrome plating, nickel plating, tungsten carbide, Stellite, Teflon
- Interior polishes and cleanup
- Special packing materials as graphite, food grade TPE, Air purge packing glands
- Lip seal packing
- Self adjusting packing follower
- Mechanical rotor shaft seals
- Shaft seal area polishes
- Inlet material deflector
- Venting thimble
- Housing vent
- End plate purges
- Housing "O" rings
- Rotor tips and edges beveled
- Rigid or flexible tips of brass or polyurethane
- Painted or coated per customers specification



SIZE	A	B	C	D	E	F	G
4	8.00	19.25	10.31	7.69	7.31	----	0.31
5	9.00	20.25	10.81	8.19	7.81	----	0.44
6	10.00	21.25	11.31	8.69	8.31	13.31	0.44
8	12.00	23.50	12.44	9.81	9.44	14.31	0.44
10	14.00	26.38	13.88	11.25	10.88	15.38	0.44
12	17.00	28.38	14.88	12.25	11.88	16.38	0.56
14	20.00	29.62	15.38	12.75	12.38	18.00	0.56
16	22.00	32.75	17.31	13.94	13.56	19.00	0.62
18	24.00	34.75	18.31	14.94	14.56	19.94	0.62
20	26.00	38.62	20.31	16.81	16.44	22.00	0.62
22	28.00	40.62	21.31	17.81	17.44	23.00	0.62
24	30.00	42.62	22.31	18.81	18.44	24.00	0.62

Round Flange Dimensions (inches)				
H	J	K	L	M
9.00	4.00	7.50	8	11/16
10.00	5.00	8.50	8	13/16
11.00	6.00	9.50	8	13/16
13.50	8.00	11.75	8	13/16
16.00	10.00	14.25	12	15/16
19.00	12.00	17.00	12	15/16
21.00	13.00	18.75	12	1 1/16
23.50	15.00	21.25	12	1 1/16
25.00	17.00	22.75	16	1 1/16
27.50	19.00	25.00	16	1 1/4
29.75	21.00	27.25	20	1 3/8
32.00	23.00	29.50	20	1 3/8

Square Flange Dimensions (inches)						
Q	R	S	T	U	V	W
7.50	4.00	0.62	3.12	----	8	9/16
8.50	5.00	0.62	3.62	----	8	9/16
9.50	6.00	0.62	4.12	----	8	9/16
11.50	8.00	0.62	5.12	2.56	16	9/16
14.75	10.00	1.00	6.38	3.19	16	9/16
16.75	12.00	1.00	7.38	3.69	16	9/16
18.00	13.00	1.00	8.00	4.00	16	9/16
20.00	15.00	1.00	9.00	4.50	16	11/16
22.00	17.00	1.00	10.00	5.00	16	11/16
25.50	19.00	1.25	11.50	5.75	16	13/16
27.50	21.00	1.25	12.50	6.25	16	13/16
29.50	23.00	1.25	13.50	6.75	16	13/16




For more information
visit our website
at
www.younginds.com/RV
or
call 570-546-3165